

FIRST

C.A.D. INFORMATION

C.A.D. DRAWING NAME		DRAWN BY
F:\DRAWINGS\Stroud\Cirencester\BreweryArtsYouthHostel		TA
PLOTTED FOR	PLOT DATE	CHECKED
PLANNING		PH

e: mail@potterandholmes.com www.potterandholmes.com

REVISIONS

A 27.02.15 TA
GENERAL UPDATE



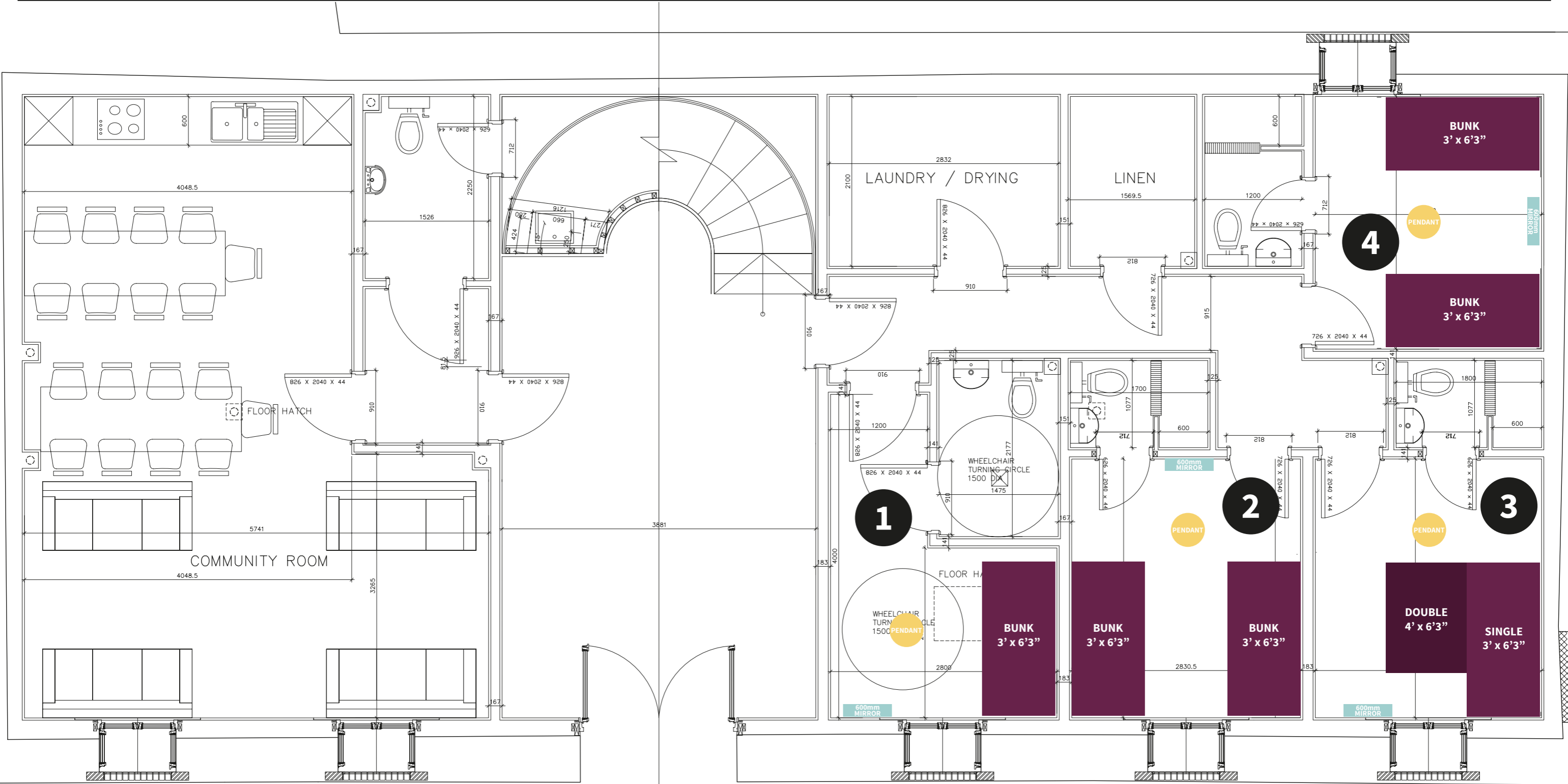
POTTER & HOLMES · ARCHITECTS

PROPOSAL
FIRST FLOOR PLANS

NEW BREWERY ARTS YOUTH HOSTEL
BREWERY COURT, CIRENCESTER GL7 1JH

SCALE	DATE	DWG.No	REV
1:50@A3	27.02.15	P02	A

SUITE V, 2 ST. ALDATE ST. GLOUCESTER GL1 1RP TEL: 01452-526330



GROUND

- KEY**
- BRICK
 - STONE
 - RESILIENT BAR
 - ==== RAISED FLOOR BETWEEN TRUSSES TO SUPPORT RAISED FLOOR
 - EXTERNAL WALL PANELS

C.A.D. INFORMATION		REVISIONS	
C.A.D. DRAWING NAME	DRAWN BY	A 06.11.14 TA	C 20.11.14 TA
F:\DRAWINGS\Stroud\Cirencester\Brewery Arts Youth Hostel	TA	GENERAL UPDATE	AS CLOUD
PLOTTED FOR	PLOT DATE	B 17.11.14 TA	D 13.01.15 TA
-	-	GENERAL UPDATE	GENERAL UPDATE
e.mail@potterandholmes.com www.potterandholmes.com			

POTTER & HOLMES · ARCHITECTS

PROPOSAL WALLING AT GROUND FLOOR LEVEL

NEW BREWERY ARTS YOUTH HOSTEL BREWERY COURT, CIRENCESTER GL7 1JH

SCALE	DATE	DWG.No	REV
1:25 A1	16.10.14	L(-)-03	D

SUITE V, 2 ST. ALDATE ST. GLOUCESTER GL1 1RP TEL: 01452-526330